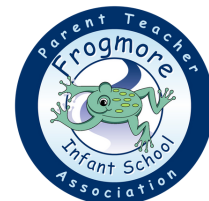


FROGMORE INFANT SCHOOL PTA INFORMATION



About the PTA

The PTA is an open community of parent volunteers. Fundraising by the PTA supports the school to provide opportunities, equipment and resources for the children, which the schools budget could not otherwise afford. The PTA aims to develop effective relationships between the staff, parents and others associated with the school.

All parents and carers at Frogmore Infant School automatically become members once their child has enrolled in the school. We have provided some information here about the PTA, its important role within the school and the many ways in which you can support it.

Further information can be found on our website: <https://www.pta-events.co.uk/fis-pta>

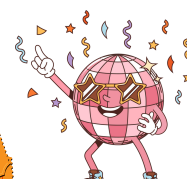


How we raise money

- School events such as discos, raffles & bake sales
- Event sponsorship
- Hart lottery
- Clothes recycling bin
- Gift Aid



- Second-hand uniform sale
- Name label commissions
- Easy Fundraising
- Matched funding
- Grants



We are always keen to hear new ideas!

More details on these can be found on the next page and our website.

How we have spent the money

Over the last couple of years we have had a large fundraising target to fund the redevelopment of the main playground. Thanks to the support of the school community, nearly £20,000 has been raised to complete Phase 1 of the playground work, which was completed in April 2025.

Our focus now is to fundraise to provide storage sheds for equipment to facilitate loose-parts play.



Before



After

Other recent purchases include a Canva Pro membership, a lighting rig and a rug for a Year 1 classroom. Further details on how the funds have been spent can be found on the PTA website.

How you can help

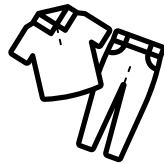
- Bring in physical donations that we can use for our events. Homemade or shop-bought treats for cake sales, school uniform you no longer need, and items we collect on non-uniform days that we can use as prizes or for events.
- Let us know if you have a particular skill. You may enjoy face painting, be good at organising, talking to people or have another talent that we could make use of at one of our events or fundraising activities.
- Buy a cake! All funds raised at PTA events go back to the school and our children, so by buying an ice pop, a ticket for a disco, some second-hand uniform and coming to events you are helping us!
- Talk to us. Our events and meetings are a great way to find out more about the PTA and have a say. You are welcome to come along and listen and learn or take a more active role if you would like to. We are here to represent and support the school community.

Information from the PTA is circulated through school email, school app message or via class/year group WhatsApp message.

Details can also be found on the PTA website and notice boards around school.



Second-hand uniform



We have a selection of second hand uniform available to purchase. We hold regular uniform sales and you can contact us if you are in need of anything.

Hart Lottery



Hart Lottery is an exciting weekly lottery that raises money for good causes in Hart. Tickets can be purchased for £1 a week for a single month as a one off purchase, or on an ongoing basis by direct debit. Our cause page can be found at the below link:

www.hartlottery.co.uk/support/frogmore-infant-school-pta



Name label commission

These cost no more than you would have originally spent but gives a little back to the school.

My Nametags

www.mynametags.com

We receive 24% of the order total when you use the school ID: **19075**



Stampstastic

www.stampstastic.co.uk

Use the unique tracking link:

<https://bit.ly/STAMPGUI7ONY>

The PTA earn 15% commission using this link. The discount code: **GUI7ONY** will entitle you to a £5 discount when purchasing a Stampstastic Deluxe bundle.



Stickins

www.stikins.co.uk

We earn 30% commission when you use the code: **35362** when you order.



How businesses help

Does your employer have a match funding policy? Since the PTA is a registered charity, some organisations may match the funds raised at our events, such as the summer and winter fairs. Match funding may be based either on the total amount raised at an event or specifically for the stall where their employee is working.

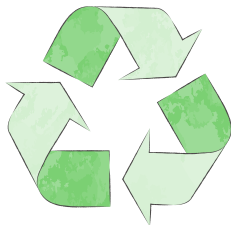
Do you own a business that would be willing to support the PTA by offering a prize, resources or sponsorship for one of our events? Alternatively, do you work for a business or organisation that could help?

Clothes Recycling

The school has a recycling bin located at the far end of the staff car park, where you can donate clean, usable clothing and textiles.

Accepted Textiles:

- Wearable clothing
- Paired wearable shoes
- Bed sheets
- Towels
- Soft toys
- Fashion accessories (e.g., ties and belts)
- Handbags and bags



The school earns money for the donated items based on their weight.

Easy Fundraising

Easyfundraising turns your everyday online shopping into free donations for the school. Just start your online shopping first at easyfundraising, then shop as normal. The retailer will then make a small donation to say "thank you".

www.easyfundraising.org.uk



Gift Aid

The PTA is registered for Gift Aid with HMRC. This means that we can claim back an extra 25% on any donations or sponsorship where the donor is a UK taxpayer and able to sign a gift aid declaration. This helps us to raise more funds without any additional cost to the donor, provided they have paid the same amount or more in income tax or capital gains tax in the same tax year.

PTA Website

The PTA website provides information about upcoming events and activities, as well as the option to purchase tickets for events like school discos. To buy tickets you must register on the website. However, all information on the website can be viewed without registering.

<https://www.pta-events.co.uk/fis-pta>



Contact us

If you would like to contact the PTA please send us a message via the school office or email:

treasurer.fis.pta@gmail.com / frogmoreinfantspta@gmail.com