



# Christmas Newsletter 2025

## **Christmas Competition**

By Monday 24<sup>th</sup> November

If your child is feeling a little bit creative, then encourage them to enter Mrs King's Christmas Competition- 'Sponsor a tree decoration for £1'. Each child will have a tree decoration sheet (bauble) in their book bag to decorate as they wish.



Please then return with a £1 donation to the office by Monday 24<sup>th</sup> November. There will be a prize for each year group. All entries will be displayed in the run up to Christmas! Please ensure you have written your child's name and class on the back of their entry.

## **Christmas Raffle**

w/c Monday 24<sup>th</sup> November

**Raffle tickets will be sent home w/c Monday 24<sup>th</sup> November.**

*There are a range of prizes including:*

*Beauty Vouchers  
Playball Holiday Camp  
Soft Play Vouchers  
1-2-1 Swimming Session  
£30 Pathfinders Voucher  
Drone (with camera)  
Cocktail Making Kit  
Dinner Vouchers  
£25 Yateley Jewellers Voucher  
Various Hampers  
&  
Much more!*

**Raffle tickets cost £1 each.**

If you'd like to purchase any tickets, please complete the ticket stub(s) and return to the school office with the cash by Friday 12<sup>th</sup> December at 9am.

If you'd like any additional raffle tickets, you can buy these from the school office.

**The draw and winners will be announced on Friday 12<sup>th</sup> December.**

## **Frogmore Christmas Tree**

Friday 28<sup>th</sup> November



We are joining with local schools, pre-schools and St. Barnabas Church for a special "Switching on of the Frogmore Christmas Tree Lights" ceremony on Friday 28<sup>th</sup> November at 6pm. This will be located on the grass outside St.

Barnabas Church. We hope many of you will join us to sing Christmas songs and carols, awe at the lights and maybe even meet Father Christmas! Food and drink stalls (hot chocolate, hot dogs, sweets and mince pies) will be open from 5.30pm. Don't forget to bring a torch!



# Christmas Newsletter 2025

## Christmas Cards

From Monday 1<sup>st</sup> December

From Monday 1<sup>st</sup> December there will be a post box in the entrance hall for children to post their Christmas cards to their school friends. Please ensure that ALL envelopes show full names and class name so we can ensure the correct children get the correct cards!



## Visits to St. Barnabas Church

w/c Monday 1<sup>st</sup> December

Once a year we like to arrange for the children to visit the local church for some festive fun activities as part of their RE topic. We will be walking the children over to St. Barnabas Church on the dates and times below:

Year R – Monday 1<sup>st</sup> December – 9.30 to 10.30am

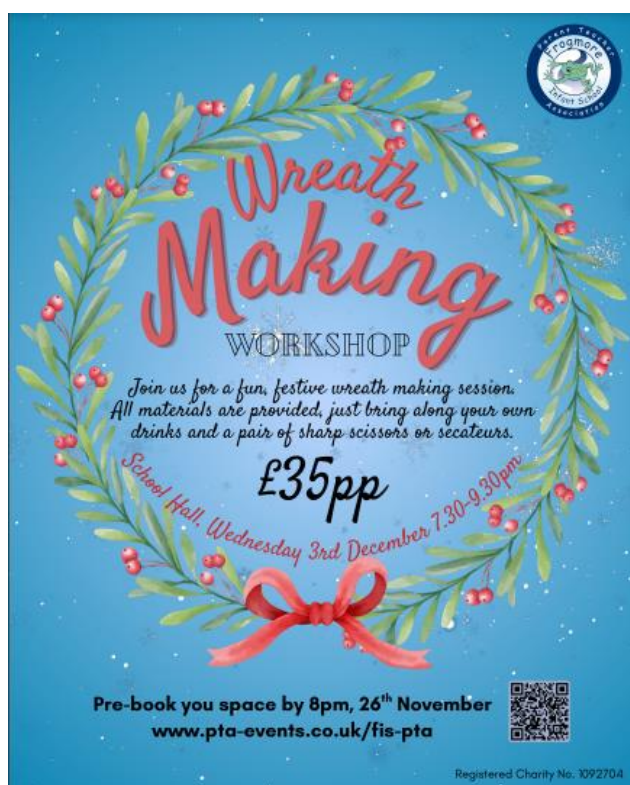
Year 1 – Tuesday 2<sup>nd</sup> December – 9.30 to 10.30am

Year 2 – Thursday 4<sup>th</sup> December – 9.30 to 10.30am

If you are able to volunteer your time and attend the Church with us, please complete the Google forms which will be sent out soon.

## Wreath Making Workshop

Wednesday 3<sup>rd</sup> December



Join us for a fun and festive evening on Wednesday 3<sup>rd</sup> December 7.30pm-9.30pm.

Pre-book your space by 8pm on Wednesday 26<sup>th</sup> November.

<https://www.pta-events.co.uk/fis-pta>



# Christmas Newsletter 2025

## Christmas Dinner

Thursday 11<sup>th</sup> December

The children may wear a Christmas jumper or red and green on this day to help get into the festive spirit! You will shortly receive a pre order form with more information.



## PTA Christmas Fair

Thursday 11<sup>th</sup> December



**There will be a variety of festive stalls -**

Teddy Tombola, Wine Tombola (adults only), Books, Ride on Reindeer, Snowman Splat, Pick a Stick, Glitter Tattoo, Lucky Dip, Pin the Nose on the Reindeer, Hook a Duck and refreshments. There will also be second hand uniform for sale. Please don't forget to bring a bag!

Stalls will cost 50p/£1. Cash or prepay card (see below) are preferred please.

**Christmas Fair prepay cards** - These are a great option for those who only usually have card or for children to have some independence without using coins. You can order and pay for these online through the PTA website. You can collect any prepay cards ordered through the website, from the school office. Please allow 24 hours before collecting. <https://www.pta-events.co.uk/fis-pta>

In order to run all the stalls at the fair we need lots of adult volunteers! We are looking for two volunteers at a time for each of the stalls. There are two time slots for each stall 3.15-3.45 and 3.45-4.15pm. You can sign up individually or with a friend, children often enjoy helping too and they are very welcome to join their grown-ups to help. You can volunteer through the PTA website. <https://www.pta-events.co.uk/fis-pta>



**We are also looking for cake donations for our cake stall. If you would like to donate some cakes or donate some festive treats that you and your child have baked, please bring these to the school office on the morning of the Christmas Fair.**

Please note that we are unable to sell any cakes that have nuts in them.



# Christmas Newsletter 2025

## Christmas Play

Tuesday 16<sup>th</sup> & Wednesday 17<sup>th</sup> December

### Dress Rehearsal Performance

**Tuesday 16<sup>th</sup> December - 9.30am-10.30am**

Babies and toddlers are welcome to attend. Where possible please avoid bringing buggies/prams into school, due to the restricted space and fire regulations.

### Morning Performance

**Wednesday 17<sup>th</sup> December - 9.30am-10.30am**

**Adults only, aged 18 or over**

### Evening Performance

**Wednesday 17<sup>th</sup> December – 6.00pm-7.00pm**

**Adults only, aged 18 or over**

Please bring your child back to school for the evening performance at 5.30pm via the playground, outside the classroom doors, even if you don't have a ticket. All children have been allocated a role in the play and it is important they get to play their part.

In order to give all families the opportunity to attend an evening performance, while adhering to strict health and safety guidelines, we are offering **1 ticket per family per performance** (3 in total) at this stage. Any tickets not collected and paid for will then be released for resale on a first come first served basis.

The Christmas play involves all children from each year group, therefore, if you have more than one child in the school you will still be allocated one ticket per performance not per child.

Please see a step by step breakdown of the process below:

**17<sup>th</sup> – 21<sup>st</sup> November** – Allocated tickets will be available to collect and pay for via the school office, cash only at £3 per ticket.

**1<sup>st</sup> December** – Any unclaimed or unwanted tickets will be re-released for resale on a first come first served basis, via the school office, cash only at £3 per ticket. There will be no limit to how many you can buy at this stage.

Please ensure you bring your tickets to each performance in order to comply with our strict fire regulations. **We will not be able to admit anyone without a ticket.**

**Please be aware that we do allow parents/carers to take photos of our performance but these must not be shared on any social media sites.**

**Frogmore Infant School presents:**

## **A Sticky Christmas**







# Christmas Newsletter 2025

Costume letters will be sent out soon from the class teachers. You should receive these by Friday 21<sup>st</sup> November. Costumes are due in to school by Wednesday 10<sup>th</sup> December.

The PTA will be running the 'Golden Bucket' at all three Christmas performances this year. Buy a ticket for £1 (cash please) before the show. At the end of each performance, a ticket will be drawn and the winner will receive 50% of the value in the bucket.

The PTA will be selling mulled wine, tea, coffee and mince pies at the evening performance for parents

## Christmas Fun Day

Thursday 18<sup>th</sup> December

The children will be able to take part in a number of activities on this day including:

- Choosing 2 presents for their family from the present room
- Making a decoration
- A magic show
- A visit from Santa



We ask for a minimum £5 donation for each child to support this day. Please send this in a named envelope to the school office **before Monday 15<sup>th</sup> December**. Your support is very much appreciated.

## Festive Diary Dates

17.11.25- 21.11.25	Allocated Christmas Play tickets available to collect and pay
24.11.25	Christmas Competition- bauble and £1 donation due in Christmas Raffle tickets sent home this week
28.11.25	Lighting of Frogmore Christmas Tree from 5.30pm
01.12.25	YR Church Visit Christmas cards post box in entrance hall Christmas Play tickets resale
02.12.25	Y1 Church Visit
03.12.25	Wreath Making Workshop at 7.30pm
04.12.25	Y2 Church Visit
05.12.25	Non-uniform in exchange for a bottle for the Christmas Fair
10.12.25	Costumes for Christmas Play due in
11.12.25	Christmas Dinner & Christmas Jumper Day PTA Christmas Fair at 3.15pm
12.12.25	Christmas Raffle Draw
15.12.25	Christmas Fun Day £5 donation due in before this date



## Christmas Newsletter 2025

16.12.25	Christmas Play Dress Rehearsal at 9.30am
17.12.25	Christmas Play at 9.30am and 6pm
18.12.25	Christmas Fun Day
19.12.25	Break up for Christmas Holidays at 12.50pm