



November 2025

We have had a fabulous first half term. It has been such a privilege to see how well our YR children have settled into school life and how keen they are to talk to me about their learning. I have been joining in with all sorts of games at lunchtime including What's the time Mr Wolf?, football, bat and ball games, hoop rolling and following the train to name just a few! The Year 1 children have been very busy learning all about toys from the past- I don't think they could believe that I didn't own a tablet/iPad as a child! I have loved seeing their bear drawings which show such care and skill.

In Year 2, the children have had a range of visitors including a vet, snakes and tortoises to support their learning in Art and Science. Their knowledge arising from these visits is amazing and they have loved creating their own imaginary reptiles in Art.

We had a wonderful Autumn Show. Thank you for all your children's fantastic entries. Mrs Vasa, our Chair of Governors, came to judge all the entries- which was a very difficult task! We are looking forward to some exciting events this half term too!

Poppies

We will be selling poppies and other items (wrist bands, key rings) on behalf of the Royal British Legion via the school office during office opening hours. We suggest a minimum donation of £1. Please note that this is for this week only.



Raffle prizes

We are holding our annual Christmas raffle which will be drawn at the Christmas Fair to help to raise money for our playground project. If you are able to donate a prize for the raffle or work for a company who could make a donation, please let the office know. 😊

Attendance

School attendance is a high priority for the government and the school. We are committed to giving your child the very best start in life. A key part of this commitment is ensuring children attend school regularly and on time, every day the school is open. The routines and habits your child develops now, in these crucial early years, lay the foundation for their entire educational journey and future life opportunities.

While secondary school may seem a long way off, research clearly shows that consistent attendance habits established in primary and even infant school are vital for a smooth transition and success in secondary education.

We are required to monitor our attendance data rigorously and work with families and external agencies to remove barriers to attendance.



November 2025

The government expects us to regularly inform parents/carers about their child's attendance and absence levels. As a result, we send letters to parents/carers when attendance falls below 95% and 90%.

Our school target for attendance is 97%:

5 days of absence over a 190-day school year equates to approximately 97.3% attendance.

6 days of absence would result in an attendance rate slightly below 97% (around 96.8%).

We understand that sometimes absence is unavoidable e.g. illness but we are still expected to communicate with parents/carers to raise awareness of your child's attendance levels. Please do speak to Miss Heron, our Safeguarding and Attendance Officer, if you require any further information or would like to discuss any aspect of your child's attendance.

Firework Safety

- If you are using fireworks - always read the instructions, only buy from licensed sellers, don't let children help
- Sparkler safety - It is recommended that sparklers are not given to under-5s
 - Make sure everyone handling sparklers wears gloves
 - Hold sparklers at arm's length while being lit and light them one at a time
 - Don't wave sparklers about close to other people
 - Never hold a baby in your arms while you are holding a sparkler
 - When the sparkler has finished put it in a bucket of cold water



Car safety

Following recent guidance from Hampshire County Council, please note that the school car park is not for use by parents (except where permission has been directly given by the school). Please take time to look at the following link regarding guidance on safety in cars with children:

https://issuu.com/firstcar/docs/fc_parents_guide_v4_16pp_issuu_27baad3d346c52





November 2025

I'd like to say a HUGE 'Well Done' to...

Willow for achieving her Stanley level 4 award for swimming
 Bear for completing his 6th and final round of his championship in Wales and he is now EMX SPARKS BRITISH MASTERS MX10 CHAMPIONSHIP LEADER



Diary Dates

New dates in red

10.11.25	Christmas Newsletter sent to parents/carers
13.11.25	Open morning for prospective YR parents for Sep 2026 9.15am start
19.11.25	Open evening for prospective YR parents for Sep 2026 7.00pm start Anti-bullying assembly
24.11.25	Disability workshop for all pupils
28.11.25	5.30pm for 6pm Lighting of Frogmore Christmas Tree
02.12.25	Nasal flu vaccines
05.12.25	Non-uniform in exchange for a bottle for the Christmas Fair
10.12.25	Costumes for Christmas play in school please- more information to follow
11.12.25	Christmas lunch- more information to follow Christmas Jumper Day PTA Christmas Fair at 3.15pm
16.12.25	Christmas play dress rehearsal
17.12.25	Christmas play at 9.30am and 6pm
18.12.25	Christmas fun day
19.12.25	Break up for Christmas holidays at 12.50pm
05.01.26	Back to school for 8.40am
12.02.26	Break up for half term at 3.15pm
13.02.26	INSET day- school closed for all children
23.02.26	Back to school for 8.40am
05.03.26	World Book Day
27.03.26	Break up for Easter at 12.50pm
13.04.26	INSET day- school closed for all children
14.04.26	Back to school for 8.40am
04.05.26	Bank Holiday- school closed for all children
22.05.26	Break up for half term at 3.15pm
01.06.26	Back to school for 8.40am Local History Week
21.07.26	Break up for summer holidays at 12.50pm
22.07.26	INSET day- school closed for all children



November 2025



Safeguarding - A reminder that safeguarding is everyone's business

The **Designated Safeguarding Lead** for our school is **Jill King**; in her absence the **Deputy DSL** is **Rachel Heron**. If you have a concern about a child, however small you feel this might be, please do come and speak to us.

Alternatively, Children's Services can be contacted on 0845 603 5620. The NSPCC also have a helpline for you to report concerns, they can be contacted on 0808 800 5000.

Domestic Abuse Helpline <https://www.gov.uk/guidance/domestic-abuse-how-to-get-help> 0808 2000 247

If you are in immediate danger, call 999 and ask for the police. If you can't speak and are calling on a mobile press 55 to have your call transferred to the police. Find out how to call the police when you can't speak.



November 2025

Frogmore Infant School PTA

Recycling Fashion isn't Just a Fad.

IT'S A WAY TO HELP THE SCHOOL RAISE FUNDS!



How can you help?

Did you know we have a clothing bank on the school site where you can donate textile items and earn the school money back at the same time? Last year we managed to raise £133.20 just from donated items and we need your help to raise even more this year!

Situated in between the Infant and Junior Schools is a big GREEN Astra Recycling Clothing Bin. Just bag up items from the list below and pop them in the bin, it's as easy as that. The PTA will receive a donation for all items received!

Qualifying items include:

- Clothes
- Shoes
- Bed Linen
- Soft Toys
- Towels
- Accessories (belts, hats, gloves, scarves, handbags etc)

Items that cannot be donated:

- Duvets or Cushions
- Off Cuts
- Carpets
- Curtains

Registered Charity: 1092704



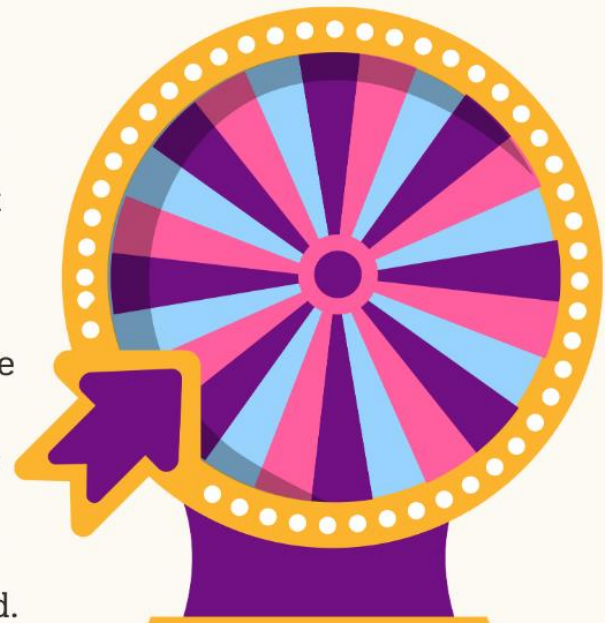
November 2025



HART LOTTERY

Did you know that the Hart Lottery supports **Frogmore Infant School** by donating a portion of ticket sales? Last year we received **£269!**

Tickets for the lottery cost just £1 per week, with a top prize of **£25,000!** The lottery is open to everyone, so please share this information with loved ones and let's see if we can beat last year's total! Funds raised will go towards the redevelopment of the main playground.



Registered Charity: 1092704



[HTTPS://WWW.HARTLOTTERY.CO.UK/SUPPORT/FROGMORE-INFANT-SCHOOL-PTA](https://www.hartlottery.co.uk/support/frogmore-infant-school-pta)